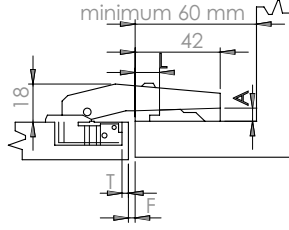
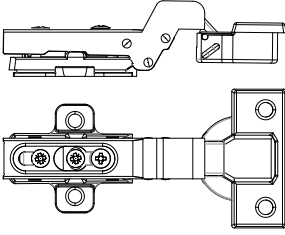
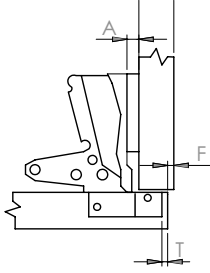


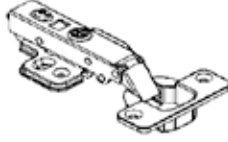
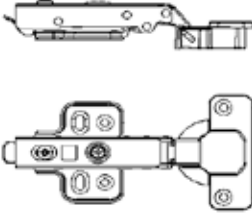
Teknik Bilgiler / Technical Informations	
FULLOVERLAY HINGES / DÜZ MENTEŞE 0 mm.	
Opening Degree / Açılma açısı	110°
Calyx Diameter/ Çanak Çapı	35 mm.
Calyx Depth / Çanak Derinliği	11,2 mm.
Hinges's Calyx / Menteşe Çanağı	Steel
Weight / ağırlık	58-60 gr.
Formula / Formül	$A=18+F+T-S$
S	Side Wall Thickness Yan Duvar Kalınlığı
A	Base Thickness Altlık Kalınlığı
F	Fuga Calyx Space
T	Çanak Mesafesi
	Joint
	18
	16
	5 7 7 7 9 9
	1 1 2 1 1 2
	4 6 5 4 6 5



Teknik Bilgiler / Technical Informations	
<b>HALFOVERLAY HINGES / DEVEBOYNU MENTEŞE 9 mm.</b>	
Opening Degree / Açılma açısı	110°
Calyx Diameter/ Çanak Çapı	35 mm.
Calyx Depth / Çanak Derinliği	11,2 mm.
Hinges's Calyx / Menteşe Çanağı	Steel
Weight / ağırlık	58-60 gr.
Formula / Formül	A=9+F+T-S
S	Side Wall Thickness Yan Duvar Kalınlığı
A	Base Thickness Altlık Kalınlığı
F	Joint Fuga
T	Calyx Space Çanak Mesafesi
	18
	16
	5 7 7 7 7 -
	10 10 11 9 10 -
	4 6 5 5 4 -

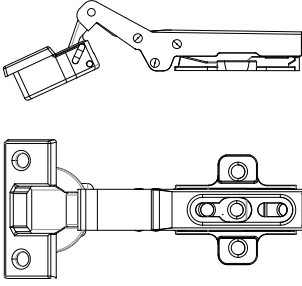


Teknik Bilgiler / Technical Informations	
INSET HINGES / SUPER DEVEBOYNU MENTEŞE 18 mm.	
Opening Degree / Açılma açısı	110°
Calyx Diameter/ Çanak Çapı	35 mm.
Calyx Depth / Çanak Derinliği	11,2 mm.
Hinges's Calyx / Menteşe Çanağı	Steel
Weight / ağırlık	58-60 gr.
Formula / Formül	$A=F+T$
	18
A	Base Thickness Aıtlık Kalınlığı
	5 7 7
	Joint
F	Fuga
	1 1 2
	Calyx Space
T	Çanak Mesafesi
	4 6 5

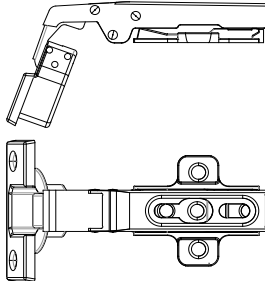
Teknik Bilgiler / *Technical Informations*

## HYDRAULIC HINGE / PİSTONLU MENTEŞE

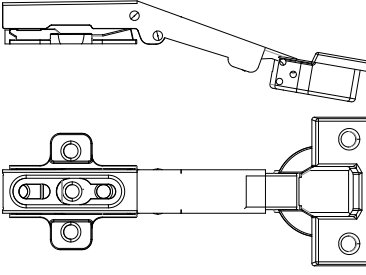
Opening Degree / Açılma açısı	110°
Calyx Diameter/ Çanak Çapı	35 mm.
Calyx Depth / Çanak Derinliği	11,2 mm.
Hinges's Calyx / Menteşe Çanağı	Steel
Weight / ağırlık	106-109 gr.

**Teknik Bilgiler / Technical Informations****45 DEGREE HINGES /45 DERECE MENTEŞE**

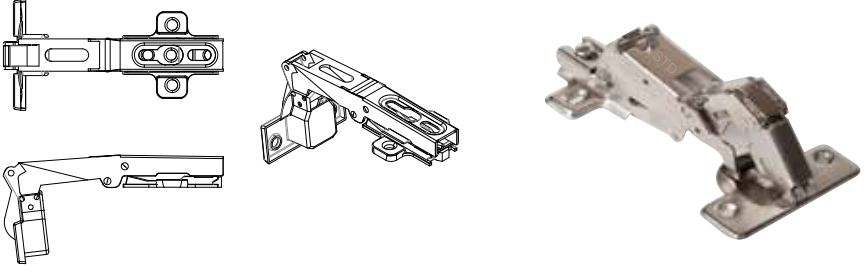
Opening Degree / Açılma açısı	45°
Calyx Diameter/ Çanak Çapı	35 mm.
Calyx Depth / Çanak Derinliği	11,2 mm.
Hinges's Calyx / Menteşe Çanağı	Steel
Weight / ağırlık	70-73 gr.

**Teknik Bilgiler / Technical Informations****90 DEGREE HINGES /90 DERECE MENTEŐE**

Opening Degree / Açılma açısı	90°
Calyx Diameter/ Çanak Çapı	35 mm.
Calyx Depth / Çanak Derinliđi	11,2 mm.
Hinges's Calyx / Menteőe Çanađı	Steel
Weight / ađırlık	68-70 gr.

**Teknik Bilgiler / Technical Informations****135 DEGREE HINGES / 135 DERECE MENTEŞE**

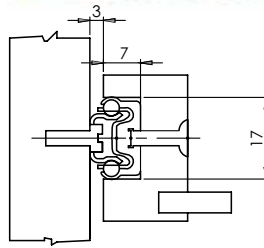
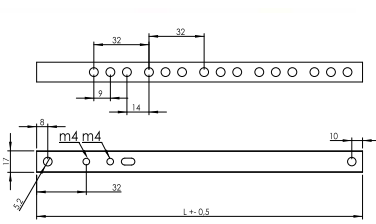
Opening Degree / Açılma açısı	135°
Calyx Diameter/ Çanak Çapı	35 mm.
Calyx Depth / Çanak Derinliği	11,2 mm.
Hinges's Calyx / Menteşe Çanağı	Steel
Weight / ağırlık	78-81 gr.

Teknik Bilgiler / *Technical Informations*

## 165 DEGREE HINGES / 165 DERECE MENTEŐE

Opening Degree / Açılma açısı	165 <sup>o</sup>
Calyx Diameter/ Çanak Çapı	35 mm.
Calyx Depth / Çanak Derinliđi	11,2 mm.
Hinges's Calyx / Menteőe Çanađı	Steel
Weight / ađırlık	142-144 gr.

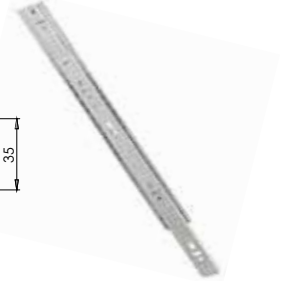
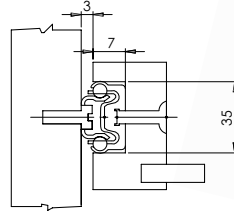
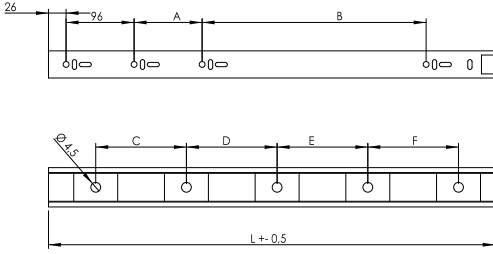




## Teknik Bilgiler / Technical Informations

	LENGHT / BOY				
WIDTH / GENİŞLİK	310	342	374	406	438
17 mm TAŞIMA KAPASİTESİ / CARRYING CAPACITY MAX. (KG)	12	12	12	12	12

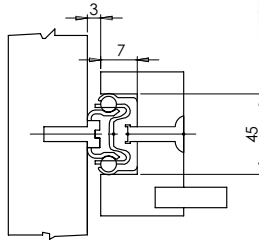
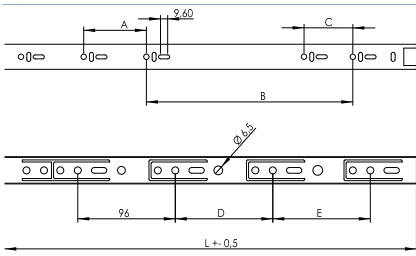
Sac kalınlığı 1.0 \* 1.0 mm. dir. / Metal sheet thickness is 1.0 \* 1.0 mm.



## Teknik Bilgiler / Technical Informations

		LENGHT / BOY					
WIDTH / GENİŞLİK	300	350	400	450	500	550	
35 mm TAŞIMA KAPASİTESİ / CARRYING CAPACITY MAX. (KG)	35	35	35	35	35	35	

Sac kalınlığı 1.0 \* 1.0 \* 1.0 mm. dir. / Metal sheet thickness is 1.0 \* 1.0 \* 1.0 mm.



Teknik Bilgiler / Technical Informations						
		LENGHT / BOY				
WIDTH / GENİŞLİK	300	350	400	450	500	550
45 mm						
TAŞIMA KAPASİTESİ / CARRYING CAPACITY MAX. (KG)	45	45	45	45	45	45

Sac kalınlığı 1.0 \* 1.0\* 1.2 mm. dir. / Metal sheet thickness is 1.0 \* 1.0 \*1.2 mm.



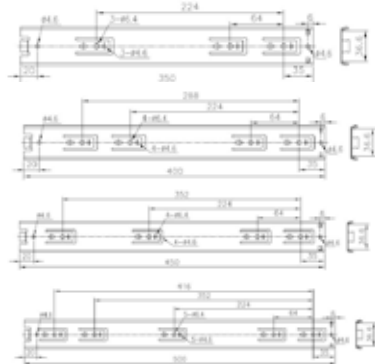
SÜRGÜ UZUNLUĞU  
SLIDE LENGTH L

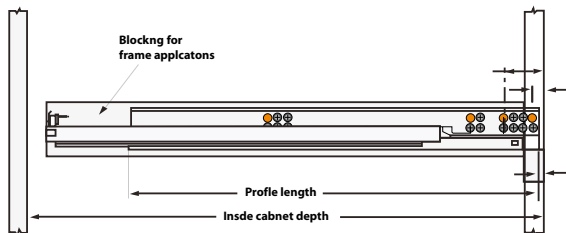
SÜRGÜ HAREKETİ  
SLIDE TRAVEL



Teknik Bilgiler / Technical Informations		
	SÜRGÜ UZUNLUĞU SLIDE LENGTH L (mm)	SÜRGÜ HAREKETİ SLIDE TRAVEL (mm)
350 (14')	350	315
400 (16')	400	365
450 (18')	450	465
500 (20')	500	550

Et kalınlığı 1,2mm x 1,2 x 1,5 mm'dir.  
45 KG taşıma kapasitesi  
Thickness is 1,2 mm x 1,2 x 1,5 mm.  
45 KG carrying capacity  
Galvaniz ve kaplamalı seçenekleri ile  
üretim yapılmaktadır.  
The production can be choice of  
galvanised and coating.

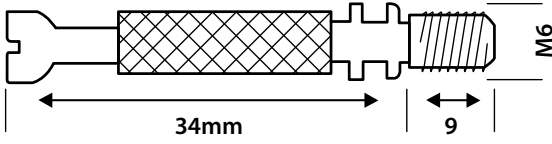




## Teknik Bilgiler / *Technical Informations*

### BOY / SIZE

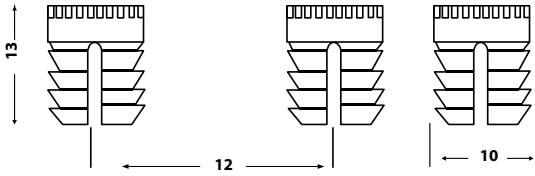
- 30 cm
- 35 cm.
- 40 cm.
- 45 cm.
- 50 cm.
- 55 cm.



## Teknik Bilgiler / Technical Informations

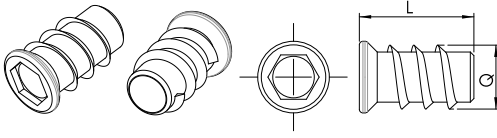
WIDTH GENİŞLİK	HEIGHT BOY	DIAMETER ÇAP	WEIGHT AĞIRLIK / gr/p
M6	34	9	6,78

CQ15 malzemeden üretilmiştir.



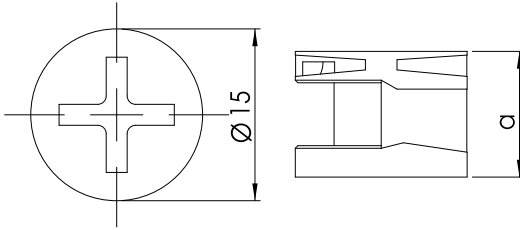
## Teknik Bilgiler / Technical Informations

WIDTH GENİŞLİK	HEIGHT BOY	DIAMETER ÇAP	WEIGHT AĞIRLIK / gr/p
11	13	6	0,67



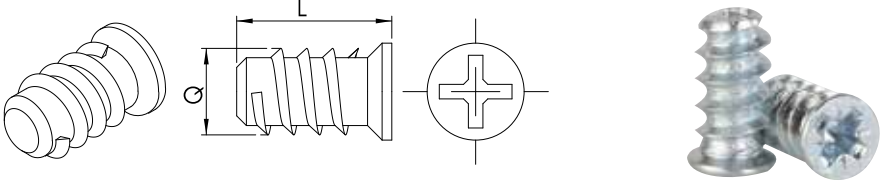
## Teknik Bilgiler / Technical Informations

THREAD TYPE DİŞ TİPİ	DIAMETER ÇAP(Q)	HEIGHT BOY(L)	COATING RENK	WEIGHT AĞIRLIK / gr/p
M6	8	13	ÇİNKO	3,00
M6	8	11	ÇİNKO	2,90
M8	10	20	ÇİNKO	3,30
M8	10	15	ÇİNKO	3,80



## Teknik Bilgi / Technical Informations

DIAMETER ÇAP	HEIGHT BOY	MATERIAL MALZEME	COATING KAPLAMA	WEIGHT AĞIRLIK / gr/p
15	12	ZAMAK	ÇİNKO / NİKEL	5,30



## Teknik Bilgiler / Technical Informations

Q	6	6	6
L	9	14	20
Weight / Ağırlık/ gr/p		22,76	

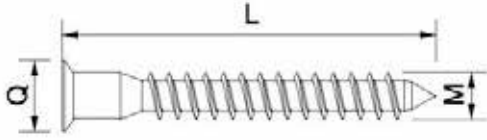
## ALLEN SİLİNDİRİK ÇEKTİRME

HEX HEAD FURNITURE BOLT  
INNENSECHSKANTSCHRAUBE

## Teknik Bilgiler / Technical Informations

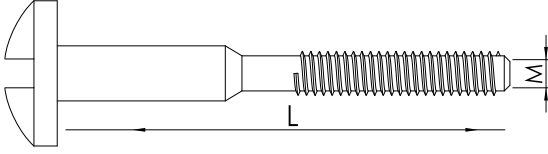
M	L	Q	A	Weight / Ağırlık/ gr/p
6	15	14	4	4,80
6	20	14	4	5,64
6	30	14	4	7,35
6	35	14	4	8,20
6	40	14	4	9,05
6	50	14	4	10,77
6	60	14	4	12,48
6	70	14	4	14,19
6	80	14	4	15,90
6	90	14	4	17,61
6	100	14	4	19,32
6	110	14	4	21,00
6	120	14	4	22,74
6	130	14	4	24,45
6	140	14	4	26,16
6	150	14	4	27,87





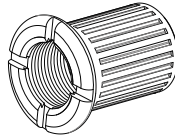
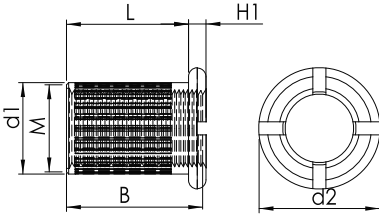
## Teknik Bilgiler / Technical Informations

Q	L	AÇIKLAMA	Weight / Ağırlık/ gr/p
6,3	50	KÜT	18,5
6,3	50	SİVRİ	18,5
6,3	50	KÜT-YILDIZ	18,5
6,3	50	SİVRİ-YILDIZ	18,5



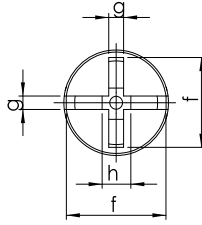
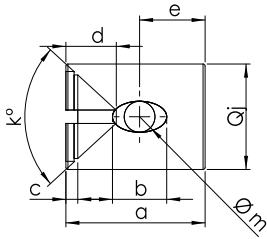
## Teknik Bilgiler / Technical Informations

M	L	Weight / Ağırlık/ gr/p
6	15	4,60
6	20	5,47
6	30	7,20
6	35	8,04
6	40	8,90
6	50	10,60
6	60	12,30
6	70	14,02
6	80	15,73



## Teknik Bilgiler / Technical Informations

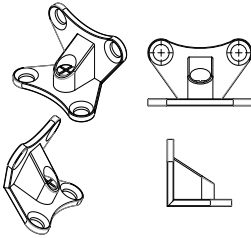
M	L	d1	d2	B	H1	Weight Ağırlık/ gr/p
6	10,5	8,8	13,5	11	2,5	4,6



## Teknik Bilgiler / Technical Informations

	min.	max.
a	13,8	14
j	9,9	10
i		6,4
f		7,2
g		1,7
e		5
b		9
Øm	5,2	5,3
d	2,3	2,8
k°		86
Weight / Ağırlık / gr/p	4,00	

## ZAMAK KELEBEK BAĞLANTI



## Teknik Bilgiler / Technical Informations

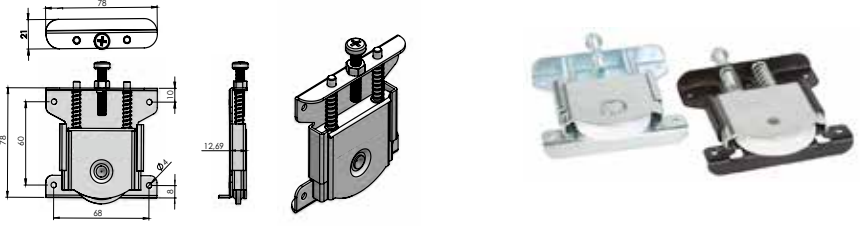
H5 Zamak \Çinko	H5 Zamak \ZINC	H5 Zamak \ZINK
H5 Zamak \Nikel	H5 Zamak \NICKEL	H5 Zamak \NiCKEL
H5 zamak \Sarı	H5 zamak \YELLOW	H5 zamak \GELB
Weight / Ağırlık / gr/p	21,00	



## Teknik Bilgiler / Technical Informations

Thread size / Anma çapı	M 8	Thread size / Anma çapı	5/16
Major Dia / Diş üstü çapı	min. 7,76	Diş Adımı / Pitch	UNC 18
	max. 7,97		UNF 24
Material / Malzeme	St37	Material / Malzeme	St37

Thread size / Anma çapı		M 8	Thread size / Anma çapı		5/16
Length / Boy	Paso Boyu / Thread Land	Weight / Ağırlık GR	Length / Boy	Paso Boyu / Thread Land	Weight / Ağırlık gr/p
100	TAM P./FULL THR.	30,20	100	TAM P./FULL THR.	28,00
110	35x35	33,22	110	35x35	30,80
120	35x35	36,24	120	35x35	33,60
130	35x35	39,26	130	35x35	36,40
140	35x35	42,28	140	35x35	39,20



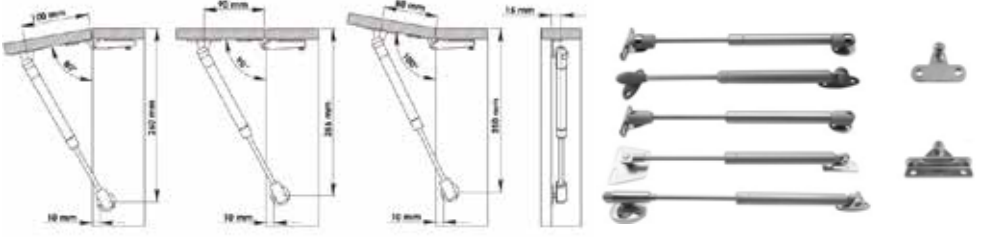
## Teknik Bilgiler / Technical Informations

	PKM 80
Taşıma Kapasitesi / Carrying Capacity (max)	80 kg

Kapak gönye ayarı; taşıyıcı mekanizma üzerinde bulunan ayar vidası ile yapılır ve sabitlenir. Taşıyıcı gövde sacı çinko kaplamalıdır. Taşıyıcı mekanizma, çelik rulman üzerine poliamid enjeksiyon baskı ve rodaj yapılmış makaralar ile çalışmaktadır. kapak paneli; taşıyıcı mekanizma makarasının ray profil kanalı içinde sabitlenen stoperin yuvasına oturması ile stoplanır.

Door square regulations can be fix and adjust with on the carrier mechanism. Carrier body sheet metal zinc coated Carrier mechanism works on steel ball bearing rollers made of polyamide with injection pressure and edging. The door panel stop with carrier channel rail profile in the reel mechanism with a fixed stopper slot.

Die TüreinsteUung und -befestigung erfolgt über die Einstellschraube, die sich auf dem Traegermechanismus befindet. Der Traegerkörper ist verzinkt. Der Traegermechanismus laeuft auf kugelgelagerten Laufrollen aus Stahl mit Polyamid Injektion. Die Türpaneel stoppt indem die Traegermechanismus-Spule sich in dem Stoppernest, welches im Schienensystem fixiert ist, festsetzt.

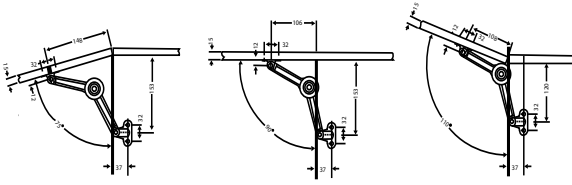


## Teknik Bilgiler / Technical Informations

Yük / Loading (Newton)	60 N	80 N	100 N	120 N
Gövde Boyu (Kısa) / Body Length (Short)	75	75	120	120
Gövde Boyu (Uzun) / Body Length (Long)	120	120	120	120

Gazlı piston alüminyum çerçeve ve tahta kapaklara kolay bir şekilde monte edilebilir.  
Gas spring is easily mounted on the wooden door and aluminium frame.  
Gasdruckdaempfer können ganz einfach an Aluminium-Rahmen und Holz-Türen montiert werden.

Gazlı pistonlarda makine yağı kullanımı işlevsel hatalara neden olabilir.  
Please do not use lubricating oil. It could affect the function of gas spring  
Die Verwendung von Schmieröl bei Gasfedern kann zu Funktionsstörungen führen.



## Teknik Bilgiler / Technical Informations

Kapak Geniřlięi / Cabinet Lid Widht	Tek Kullanım / Intended for Single Use	Çift Kullanım / Intended for Double Use
300 mm	6 kg	12 kg
350 mm	5 kg	10 kg
400 mm	5 kg	10 kg
450 mm	4 kg	8 kg
500 mm	4 kg	8 kg
550 mm	3 kg	6 kg
600 mm	3 kg	6 kg

Lale makaslar endüstriyel standartlar göz önüne alınarak üretilmiştir.

Hammade ve kaplama yapımında Avrupa DIN standartlarına uygun üretim yapılmıştır.

Ürün içerisindeki bilyalı silindirler, ürünün dayanımını ve kullanım süresini artırır, her aşamada kapaęı durdurmayı sağlar.

Breaking Arms are produced according to industrial standards.

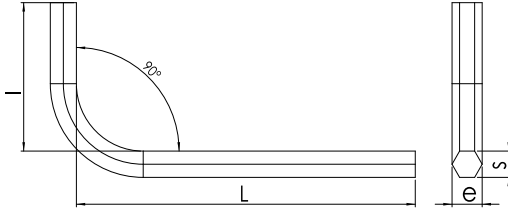
Raw material and coating features comply with DIN norms.

Ball bearing cylinders inside the products enhance the resistance usage period and they stop the cabinet in different points.

Bei der Produktion dieser Klappenhalter werden industrielle Standards berücksichtigt.

Bei Verwendung von Rohstoffen und Beschichtung wird auf die Einhaltung der europaischen DIN-Normen geachtet.

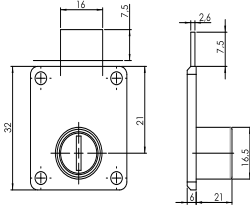
Die kugelgelagerten Rollen im Inneren verlaengern die Nutzungsdauer des Produktes.



## Teknik Bilgiler / Technical Informations

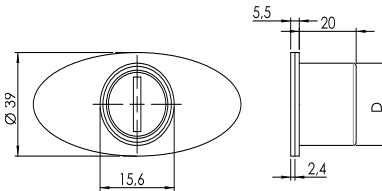
NOMİNAL	THICKNESS / KALINLIK		DIAGONAL / KÖŞEĞEN			TOLERANCE TOLERANS	STANDARD STANDART	TOLERANCE TOLERANS	LONG ARM UZUN KOL	TOLERANCE TOLERANS
	Max.	Min.	Max.	Min.	e					
0,9	0,89	0,88	0,99	0,96	10		3			
1,3	1,27	1,24	1,42	1,37	12		40			
1,5	1,50	1,48	1,68	1,63	14	0/-1	45	0/-2	90	0/-4
2	2,00	1,96	2,25	2,18	16		50		100	0/-5
2,5	2,50	2,46	2,82	2,75	18		56		112	
3	3,00	2,96	3,39	3,31	20		63	0/-3	116	0/-6
(3,5)	3,50	3,45	3,96	3,87	22		67			
4	4,00	3,95	4,53	4,44	25		70		140	0/-7
(4,5)	4,50	4,45	5,10	5,00	26		75			
5	5,00	4,95	5,67	5,58	28		80	0/-4	160	0/-8
6	6,00	5,95	6,81	6,71	32	0/-2	90		180	0/-9
(7)	7,00	6,95	7,95	7,84	34		95	0/-5	190	
8	8,00	7,94	9,09	8,97	36		100		200	0/-10
(9)	9,00	8,94	10,23	10,10	38		105		210	
10	10,00	9,94	11,37	11,23	40		112	0/-6	224	0/-11
12	12,00	11,89	13,65	13,44	45		125		250	0/-12
14	14,00	13,89	15,93	15,70	56		140	0/-7	280	0/-13
17	17,00	16,89	19,35	19,09	63	0/-3	160	0/-8	320	0/-14
19	19,00	18,87	21,63	21,32	70		180	0/-9	360	0/-15
22	22,00	21,87	25,05	24,71	80	0/-4	200	0/-10		
24	24,00	23,87	27,33	26,97	90		224	0/-11		
27	27,00	26,87	30,75	30,36	100	0/-5	250	0/-12		





## Teknik Bilgiler / Technical Informations

Malzeme:	Beyaz Alaşım
Silindir Çapı:	D16.5mmxL20mm.
Material Cylinder Bore:	White Alloy diameter of the cylinder D16.5mmxL20mm.
Material:	Weiss legiert
Zylinderdurchmesser:	D16,5 mm x L20 mm



## Teknik Bilgiler / Technical Informations

Malzeme:	Beyaz Alaşım
Silindir Çapı:	D16.5mmxL20mm.
Material Cylinder Bore:	White Alloy diameter of the cylinder D16.5mmxL20mm.
Material:	Weiss legiert
Zylinderdurchmesser:	D16,5 mm x L20 mm



## Teknik Bilgiler / Technical Informations

ODA ROZETLİ / FOR DOOR  
YALE ROZETLİ / FOR ROOM  
WC ROZETLİ / FOR WC

Alüminyum malzeme üzerine krom ve inox kaplama yapılmıştır.  
Renk: Nikel / Saten

Chrome and stainless steel coating have been done on the aluminium material.  
Color: Nickel / Satin

Es wurde Chrom- und Edelstahlbeschichtung auf Aluminiummaterial vorgenommen.  
Farbe: Nickel / Satin



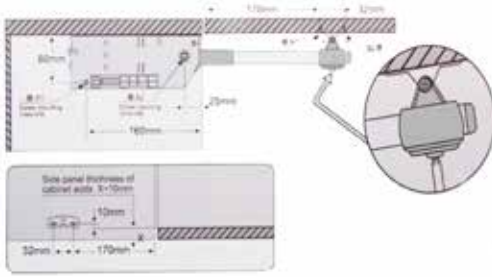
## Teknik Bilgiler / Technical Informations

ODA ROZETLİ / FOR DOOR  
YALE ROZETLİ / FOR ROOM  
WC ROZETLİ / FOR WC

Alüminyum malzeme üzerine krom ve inox kaplama yapılmıştır.  
Renk: Nikel / Saten

Chrome and stainless steel coating have been done on the aluminium material.  
Color: Nickel / Satin

Es wurde Chrom- und Edelstahlbeschichtung auf Aluminiummaterial vorgenommen.  
Farbe: Nickel / Satin



Yüksek taşıma kapasitesi

Estetik görünüm ve kolay kurulum

Her pozisyonda durabilir.

40-70 cm genişlikte ve 40 cm'e kadar yükseklikteki kapaklarda 1 adet kullanım yeterlidir.

90-120 cm genişlikte ve 40 cm yükseklikteki kapaklarda 2 adet kullanılması gerekir.

High carriage capacity

Aesthetic appearance and easy installation

It could stand in every position

Using 1 piece of this item is enough for soft cabinet lifts which have 40-70 cm wideness and from to 40 cm height.

It should be used 2 pieces of them for soft closing cabinet lifts which have 90-120 cm wideness and from to 40 cm height.

Hohe Tragfähigkeit

Ästhetischer Anblick und einfache Anbringung

Bei Schrankdeckeln mit einer Breite von 40-70 cm und einer Höhe bis 40 cm ist die Nutzung von einem Teil ausreichend

Bei Schrankdeckeln mit einer Breite von 90-120 cm und einer Höhe ab 40 cm ist die Nutzung von zwei Teilen notwendig